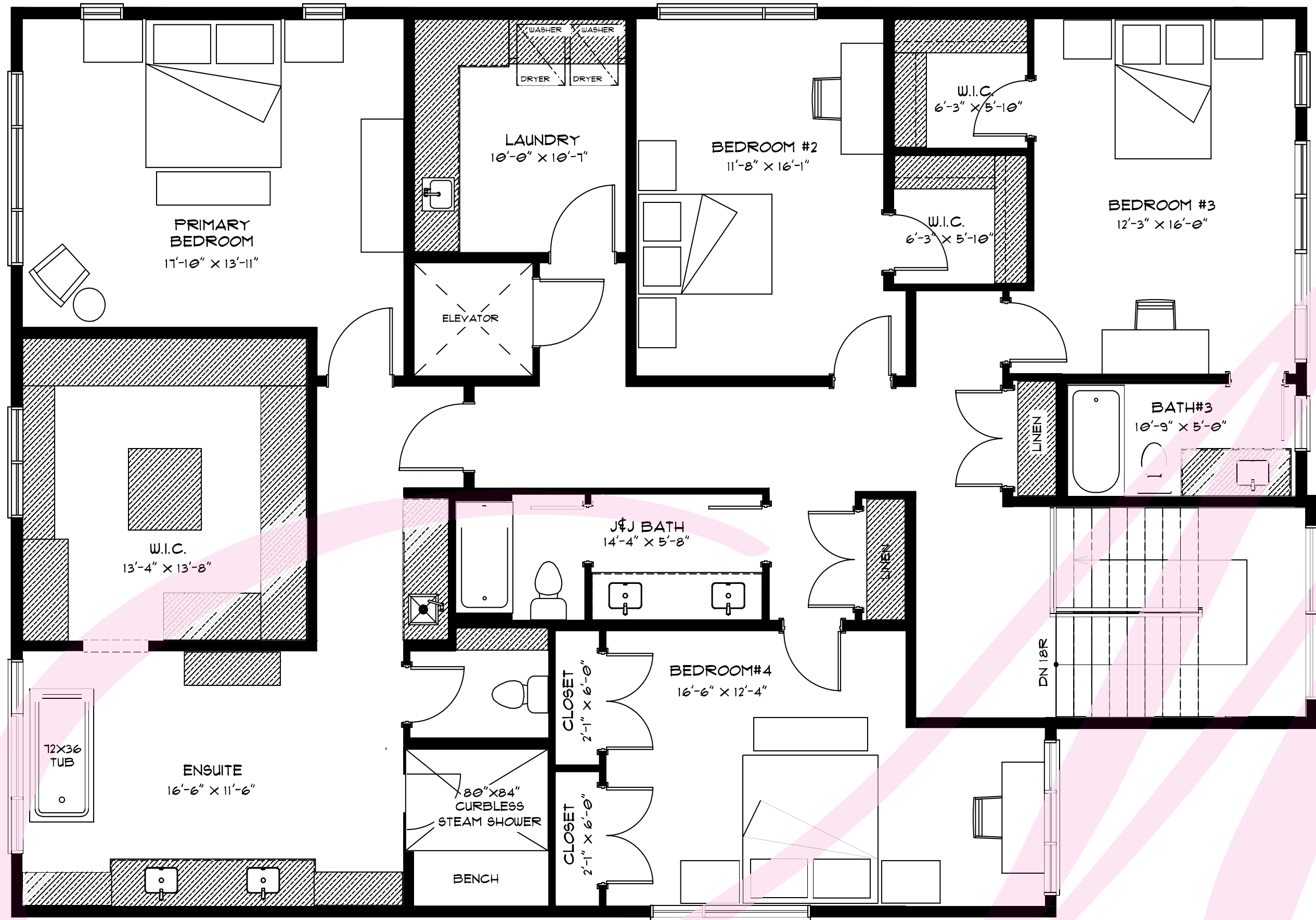


1129 DORCHESTER AVENUE SW

MAIN FLOOR - 1709 sq.ft.
TOTAL ABOVE GRADE - 4077 sq.ft.

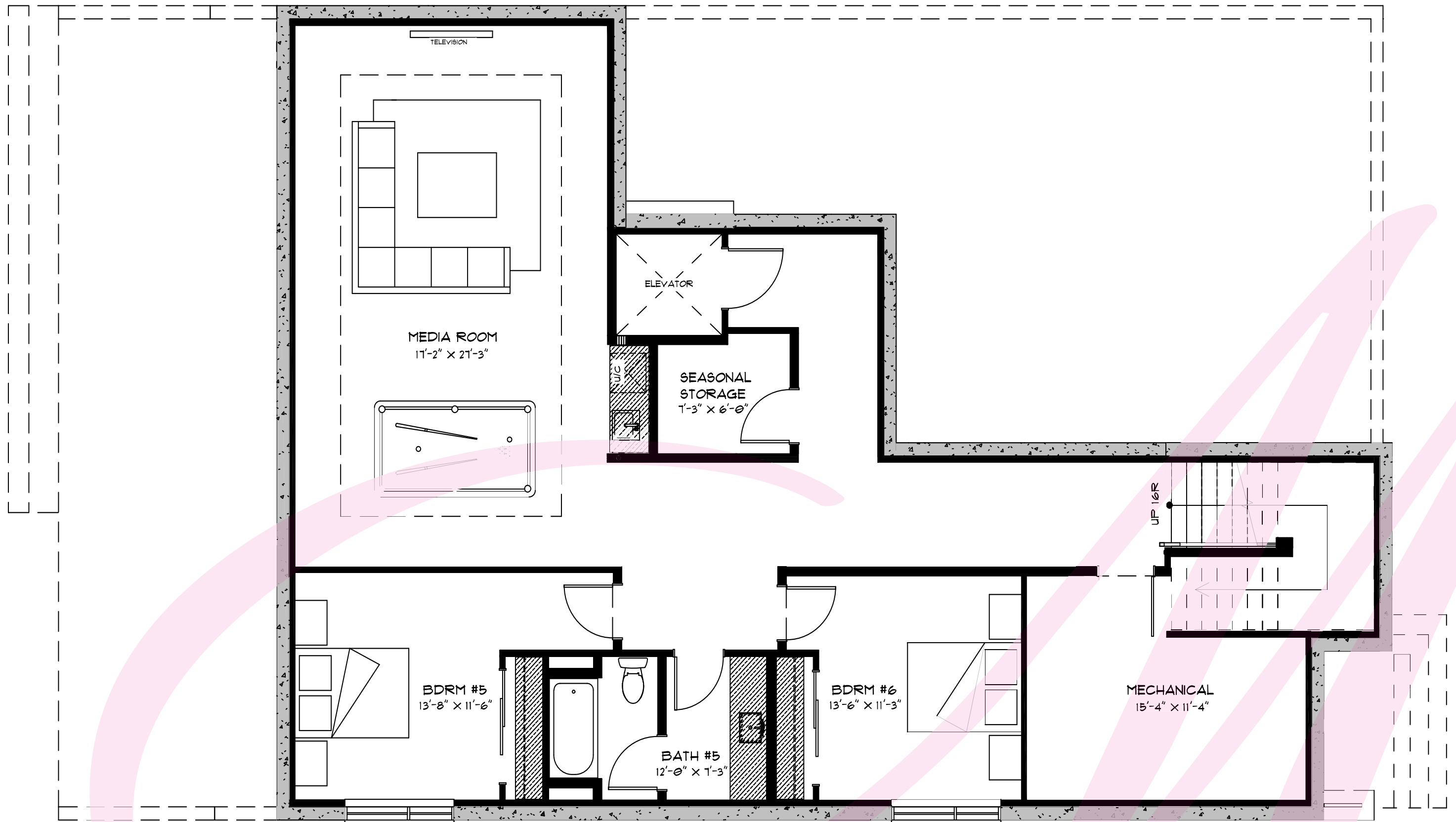
*Measurements were taken from architectural plans. Please refer to listing information for RMS square footage.



1129 DORCHESTER AVENUE SW

UPPER FLOOR - 2368 sq.ft.
TOTAL ABOVE GRADE - 4077 sq.ft.

*Measurements were taken from architectural plans. Please refer to listing information for RMS square footage.



1129 DORCHESTER AVENUE SW

LOWER FLOOR - 1332 sq.ft.
TOTAL ABOVE GRADE - 4077 sq.ft.

**Measurements were taken from architectural plans. Please refer to listing information for RMS square footage.*